

WULFTEC® STRETCH WRAPPERS WCA-TWIN - Automatic Turntable



WULFTEC

A DURAVANT COMPANY



WCA-TWIN High speed dual tower rotating turntable

The speed of a one-way wrap while keeping the X-pattern

With the dual towers/dual carriages, combine the stability and load containment of an X-pattern while achieving the speed of a one-way wrap. While one of the carriages wrap from bottom up, the other carriage wraps from top to bottom; reducing the number of rotations while achieving the same load containment as a conventional dual-way wrap.

Wrap double-stacked loads individually

Use one tower and one carriage to wrap the bottom load while the second tower and second carriage wraps the top load separately; obtain two individually wrapped loads simultaneously.

More throughput with less revolutions

Apply the same amount of stretch film with fewer revolutions by using the two film carriages to wrap a single load.

Versatility in mind

Equip one of the carriages with pneumatic roping or banding to increase load containment with a minimum number of rotations; Increased efficiency. Also secure the top and bottom portion of the load during the first rotation to improve load stability.



High Speed
Up to 22 RPM turntable rotation
for increased throughput



Maintenance-Free Carriage
NO-THREAD® film carriage with
maintenance-free spring loaded gate



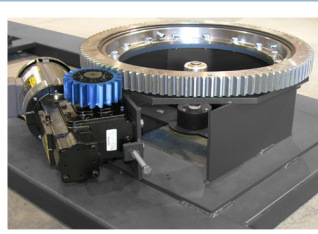
Top Platen
Top platen allows high speed rotation
while keeping the product stable



WWW.WULFTEC.COM
WE FEAR NO PACKAGING CHALLENGE

Technical Specifications

WCA-TWIN	
Production Rate ¹	Up to 100 loads per hour
Max Load Weight	4,000 lbs (5,000 lbs & 6,000 lbs optional)
Max Load Size	48" L x 48" W x 80" H (Height extension available)
Machine Dimensions ²	180" L x 200" W x 130" H
Approx. Shipping Weight	7,400 lbs
Electrical Requirements	230V/3/60
Pneumatic Requirements	5 CFM @ 80 PSI ; comes with Filter/Regulator
Controls	<ul style="list-style-type: none"> NEMA 4/12 control cabinet with quick disconnect Touch screen operated controls
Two Complete Film Delivery Systems	<ul style="list-style-type: none"> 20" NO-THREAD[®] powered pre-stretch carriage with revolutionary spring loaded carriage gate 1 HP AC motor with variable frequency drive 50-300% pre-stretch 30" or 40" carriage available
Two Complete Film Tail Treatment Units	<ul style="list-style-type: none"> Automatic film clamping with tilted clamp for clean release to the load Pulse-controlled cutter Film alignment arm and brush treatment
Turntable Drive	<ul style="list-style-type: none"> Max 22 RPM variable speed 25" ring GEAR bearing with pinion GEAR drive
Conveyors	<ul style="list-style-type: none"> 1 HP AC motor with variable frequency drive 77" dia. ½" steel plate turntable 5' in / 5' out contoured powered conveyor Heavy-duty cast iron flange mounted bearings 2½" diameter rollers on 3¾" centers
Structure	<ul style="list-style-type: none"> Heavy-duty structural steel construction
Warranty	<ul style="list-style-type: none"> 3-year unlimited cycle warranty 10-year warranty on steel structure 10-year warranty on 25" ring gear bearing Lifetime warranty on pre-stretch rollers' blue compound



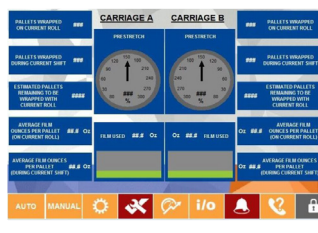
25" Ring Gear Driving System

25" ring GEAR bearing with pinion GEAR drive for unbeatable strength and durability. It's one of the main reasons we sell more heavy duty turntable units than ALL other manufacturers combined. The ring gear bearing is warranted for a period of 10 years.



Heavy Duty Structural Steel Construction

Benefit from an all-steel structural design for superior strength. That's why our stretch wrappers are well-known for their exceptional strength, durability and reliability -- no matter how harsh your environment may be. The structure is warranted for a period of 10 years.



Automatic Recipe Selection

Automatic Recipe Selection with Ethernet communication will automatically select from 1 of 16 wrap patterns when there is a product change at the palletizer.



Reduced energy usage by throughput anticipation: Conveyorized automatic machines will operate at a lower speed when the throughput from the line is slower and speed up to allow production bursts. For an average production line³, the energy savings would equal 20 x 40 watt lamps lit for 6 hours!

Reduced film waste by optimized resolution: We use a higher resolution positioning system to deliver the film in a more accurate quantity. This means an average film reduction of 4 feet of film per pallet when compared to other control systems! That's 60 miles³ of unstretched film per year!

Reduced general waste by better product protection for handling and transport: With very low wrap capability, the product is properly secured to the pallet, resulting in a pallet that is more stable for transport and therefore less damage!

Reduced electricity consumption: By using variable frequency drives on all its motors, Wulftec ensures that only the power required by the load is used, regardless of the HP of the motor. By this, we have standardized our motor sizes, allowing for less parts in inventory for us and our customers. This translates into greener operations at our end and at your end.



1. Production rate based on load and machine size and configuration
2. Overall dimensions of machine in operation
3. Based on a production rate of 60 pallets per hour, 2 shifts, where 50% of the production is in "peak-mode", 250% pre-stretch

All machine specifications are subject to change without prior notice / Nominal dimensions shown



WULFTEC

A DURAVANT COMPANY

Wulftec International Inc.

209 Wulftec, Ayer's Cliff, Quebec, Canada JOB 1C0

Toll free: 877.WULFTEC (985.3832)

Phone: 819.838.4232

Fax: 819.838.5539

Email: wulftec@wulftec.com



WULFTEC IS A MEMBER OF THE DURAVANT FAMILY OF COMPANIES

PACKAGING SOLUTIONS | FOOD PROCESSING SOLUTIONS | MATERIAL HANDLING SOLUTIONS | SUPPORTPRO

www.duravant.com